



**Beech
Companies**

Cecil B. Moore Community Newsletter



Volume 22, 1st Edition 1st Quarter, Winter 2016

Beech Community Services

"Jazz on the Ave" Celebrates 10-Years	1
North Broad Renaissance	2
College Education Scholarships Available	2
Career Development Through Job Corps	3
Free GED Preparation Classes	3
Housing Scholarships Available for College Students	3
The End of a Public Housing Era	4
Home Loan Program for Philadelphia Residents	4
In the Community Celebration of Life	5
Kindergarten Open House Week	6
Back to College for Adult Learnings	6
Recognizing Excellence Gala	6
Veterans Services Center	6
Summer Camps and Internships in the City	7
You Earned It!	7
Utility Discounts for Seniors	8
Community Policing Team	8
Community Resources Guide	8

"Jazz on the Ave" Celebrates 10-Years

For the last ten-years, "Jazz on the Ave" has brought the Cecil B. Moore community an entire day of fun-filled family fun. "The free event brings old and new residents together, while former community residents come back to the neighborhood to fellowship with family and friends," states Christine Brown, festival coordinator. "For me, this is one of the highlights of the festival, I get to see the smiles, and excitement on the faces of the residents and that lets me know that the festival is a much needed component to building good community relations."



"Jazz on the Ave" will take place on Saturday, July 30 (rain date July 31) from 12-8pm along Cecil B. Moore Avenue from Broad to 17th Streets. The festival will feature live musical performances, health screenings, children's activities, food, vendors and more. A full line-up of performers will be announced in early April 2016.



Vending space is available for a reasonable cost with limited spaces available. All vendors must possess a Commercial Activity License to vend at the festival. You may obtain information about the license process by visiting the City's website at www.phila.gov. The license is free. For vending information, please email us at www.jazzontheave.philly@gmail.com or you may call (215) 763-8868.

For up-to-date festival information, follow us on Facebook at *Jazz on the Ave*, on Instagram at *JazzontheAve.Philly*, and on Twitter @*JazzontheAve*. We will have some exciting prizes for you to win along with a chance to win a meet and greet with the artists. Please be sure to use the Hashtags #**JazzontheAve**, #**JazzontheAvePhilly**, or #**JOA**.

Several volunteer positions are available. To be considered for a volunteer position, please call the number listed. Most volunteer positions are in the "Kidz Zone" so you must be child friendly.



Cecil B. Moore Community Newsletter



Beech Community Services

Featured Information

North Broad Renaissance Finds Home

The North Broad Renaissance (NBR) has announced its new office space in Portal C of the School District of Philadelphia, located at 440 North Broad Street in Philadelphia.

“We are fortunate to locate to a space that gives us immediate and convenient access to the NBR stakeholders,” states Shalimar Thomas, Executive Director of the North Broad Renaissance. “This is vital as we work with our stakeholders on various projects and communication efforts. I don’t think we could have found a better location to start the work of revitalizing North Broad Street.”

The North Broad Renaissance (NBR) a non-profit that will serve as a Special Service District (SSD) who’s primary role is to provide communication and information to city administrators and Council, neighborhood and community groups and others who are (or may) do business or development or other activities on North Broad, from City Hall to Germantown Avenue. In partnership with community stakeholders, NBR is looking to revitalize the community, create opportunity, and improve the economic power and overall quality of life along North Broad. Learn more at northbroad.org.

The new address and contact information is:

The North Broad Renaissance
440 North Broad Street, 3rd Floor - Portal C
Philadelphia, PA 19130
(267) 318-7772
www.northbroad.org

College Education Scholarships Available

The Beech Scholarship Fund is continuing its efforts to provide high school seniors and currently enrolled students of color with educational scholarships to attend Temple University, Cheyney University, or Lincoln University for the Fall 2016 semester.

Nearly thirty deserving students have received a scholarship through the Beech Scholarship Fund. “Our goal is to provide students from the community and within Philadelphia county with much needed financial assistance to complete a four-year degree and major either in the Arts, Business, Education, Engineering, or Liberal Arts,” states Ken Scott, President and CEO of the Beech Companies.

Applicants must have a grade point average of 2.75 or higher and be active in his/her community to be eligible. The deadline for scholarship submission is Friday, April 8, 2016. To obtain an application and scholarship information, visit www.beechinterplex.com/bcs_scholarship.asp.

The Pennsylvania Legislative Black Caucus (PLBC) has established a scholarship program to assist graduating high school students and current college students of color who plan to further their education through their matriculation at a Pennsylvania college/university. The purpose of this scholarship is to assist students with their financial obligation and to foster a relationship between students and our membership. Scholarships are offered each year for full-time study at an accredited two or four-year college or university of the student’s choice located in the Commonwealth of Pennsylvania. Awards will be granted without regard to creed, religion, sexual orientation, gender, disability, or national origin.

Applicants to the PLBC Scholarship Program must:

- Be a person of color
- Be a resident of Pennsylvania
- Be a graduating high school senior or current college/university student
- Have maintained a minimum grade point average of 2.5 on a 4.0 scale

Cecil B. Moore Community Newsletter



Featured Information

Beech Community Services

College Education Scholarships Available *continued*

- Plan to enroll or be enrolled in full-time undergraduate study at an accredited two or four-year college or university in the Commonwealth of Pennsylvania for the entire upcoming academic year. Full-time undergraduate study is defined as enrollment at a college or university with at least 12 credits per semester for a two semester academic year.

Additional information and criteria are required. Visit the PLBC website at www.pahouse.com/plbc or you may email Brandon Flood at bflood@pahouse.net for additional information. All applications must be postmarked no later than April 22, 2016.

It is important to note that only the first 250 applicants will receive acknowledgement regarding receipt of their application.

Career Development Through Job Corps

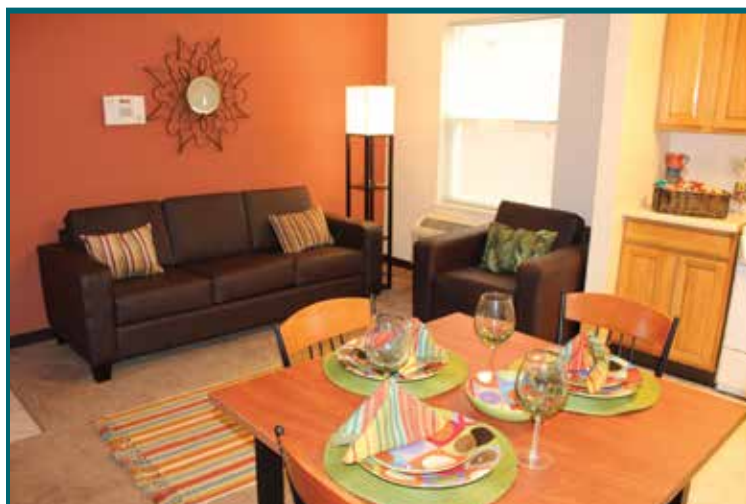
Job Corps is the nation's largest career technical training and education program for low-income people ages 16 through 24. The Career Development Services System (CDSS) is Job Corps' approach for providing seamless services to students, including recruitment, education, career training, job assistance, and transitional support services after graduation.

Students receive hands-on training in more than 100 career areas in fields such as Construction, Business and Finance, Health Care, and Information Technology. In the academic classroom, students have the opportunity to earn a high school diploma or GED, and learn employability and independent-living skills. While enrolled in the program, students receive housing, meals, basic medical care, and bi-weekly living allowances.

After graduation, Job Corps works with its graduates to help them find good jobs in high-growth industries with employers across the country. Graduates receive transitional support services, including help locating a job, housing, child-care, and transportation, for up to 21 months after they leave the program. For more information, contact www.jobcorps.gov or call (800) 733-5627.

Free GED Preparation Classes

The Women's Expansion Center of Philadelphia sponsors GED Preparation classes. Classes are scheduled 11am-1pm from Tuesday through Thursday at the Sultan Jihad Ahmad Community Foundation Center located at 1646 Ridge Avenue. All classes are free. For more information, contact Ms. Harriet Ahmad at (215) 787-0857 or Qimmah Ahmad at (215) 787-0858.



Housing Scholarships Available for College Students

Students, are you looking for a fully furnished apartment with free cable and internet services? Then Oxford Village or Beech International is the place for you. Apartments are conveniently located near public transportation and within walking distance to Temple University's main campus. All apartment units come fully furnished and include free internet, cable services, updated amenities, and on-site laundry facilities. If you are looking for a new place to call home, contact the leasing office at (215) 765-3134.

Cecil B. Moore Community Newsletter



Beech Community Services

Featured Information

The End of a Public Housing Era

The Philadelphia Housing Authority imploded two high-rises at the Norman Blumberg Projects in North Philadelphia as part of the Sharswood/Blumberg Transformation Plan.

The plan has 10 phases and will yield over 1,200 total housing units, mixing rental and homeownership units at both affordable and market rates. The restoration of the Ridge Avenue commercial corridor with businesses that will be anchored by PHA's consolidated headquarters is also a major component of the plan.

Transformation of the community will take place over several years, with the total investment estimated at over \$500 million, with an economic impact of over \$1 billion.

The Transformation Plan calls for reconnecting 23rd Street between Jefferson and Oxford Streets, and restoring the development's integration in the neighborhood. A second connector, Bucknell Street, will be added between 23rd and 24th Streets to improve the navigation neighborhood streetscape.

The Norman Blumberg Apartments in North Philadelphia dates back to the 1960s, and were first occupied in 1967. The eight-acre site was extremely dense and contained 510 units in two 18-story towers, a 13-story senior citizen high-rise, and 15 low-rise buildings. The senior high-rise will remain but will be rehabbed and modernized for seniors.

To learn more about the Sharswood/Blumberg Transformation Plan at www.sharswoodblumberg.com.

Home Loan Program for Philadelphia Residents

The Renovate & Repair Loan Program (R&R) is designed to meet serious housing issues for many of Pennsylvania's homeowners: how to make their home a healthy, comfortable place and a financial asset. The R&R Loan Program collaboration between PHFA & Beech has been developed to assist homeowners in avoiding common pitfalls in home improvement projects such as homeowners being taken advantage of by unscrupulous lenders and contractors, poor quality and unnecessary repairs.

Keystone Renovate & Repair Loan Program (R&R loan) is to help:

- Prevent homeowners from becoming victims of unscrupulous lending practices (i.e., high interest rates and costs, more money borrowed than needed, pre-payment penalties, etc.).
- Homeowners prioritize their home repair spending so that the work that they are having done is what the homeowner really needs. Improve Pennsylvania's aging housing stock for its current residents and future generations.

R&R loan can be used to:

- Pay for repairs and improvements that increase the basic livability of the home, including additions and construction that makes the home safer, more energy efficient, or more accessible to people with disabilities or people who are elderly.
- Remove or fix code violations, hook up to municipal water and sewer systems, and improve or install code-compliant septic or well systems.
- Payment for emergency repairs to critical life-safety systems in the homes, as long as the loan application is made to the Local Program Administrator within 30 days of the repair.

Features of R&R loan:

- Provide an attractive interest rate.
- Help determine the repairs and/or improvements to be done.
- Provides peace of mind in knowing that the right home repairs are done and were completed in a timely manner with quality workmanship.

R&R loan will not pay for:

- Luxury and cosmetic items such as hot tubs, pools, gazebos, etc.

For more information, or to schedule an appointment call Beech's office at (215) 763-8824.

Cecil B. Moore Community Newsletter



Featured Information

Beech Community Services

In the Community

Join the **Philly Spring Cleanup** on *Saturday, April 9, 2016* from *9am to 2pm*. Calling all residents and business owners to meet on Ridge Avenue or along North Broad Street for the Citywide Spring Cleanup... this is a great event that will benefit the community! Please register at www.phillyspringcleanup.com.

If you are interested in assisting in the cleanup efforts along Ridge Avenue, contact Stephanie Hardy at shardy01@temple.edu, or along North Broad Street, contact North Broad Renaissance at info@northbroad.org, or call (267) 318-7772.

The Check It Up Tournament LLC was formed to engage youth, 17 years and under in fast pace action on the court for the purpose of fun friendly competition amongst their peers. The youth are required to participate in the Check It Up Basketball Boot Camp to enhance their fundamentals, and knowledge of the game. Activities include anger management/discipline on and off the court, health and nutrition, skills and drills training.

The Check it Up Boot camp is *every Saturday* beginning *April 9, 2016* from *10am-12pm* at the Martin Luther King Center located at 2101 W. Cecil B. Moore Avenue. There is a fee of \$10 per week. For additional information visit, www.checkituptournament.com or www.youthstarz.org or, you may call Jeff (267)581-4680, Chelsea (267) 981-5820 or Shedrick at (267) 333-8273

Join the **Breast Cancer Pink Tea Event** on *April 26, 2016* at Grannum Hall at New Covenant Church Campus at 7500 Germantown Ave., Philadelphia, PA 19119 from 2-5pm. The event is dedicated towards acknowledging the struggle of those that have been and are currently affected by breast cancer.

The General George G. Meade School will host its annual *"Turn Down Gun Violence"* on *Saturday, June 4, 2016* from 2-6pm at Meade School located at 1600 N. 18th Street.

"In an effort to reduce gun violence amongst our community and more importantly, our youth, Turn Down Gun Violence brings awareness of the problem and solutions to the problem by engaging the community in dialogue," states Principal Raqueebah Burch. The 4-hour event will include music, entertainment, games, prizes and more.

There will be information on the problem of gun violence in the city including the effects it has on children, victims and offenders using signage, speakers, and information booths ran by various community organizations. Mediators will discuss and address tension within the community that can lead to gun violence or other violence and discuss solutions of the problem of gun violence.

Interested in donating, volunteering, or for more information about the event, contact the Meade School at (215) 684-5062.

The 22nd District Community Town Watch meetings are held on the *last Tuesday of every month* at *6:00 pm* at the 22nd Police District located at 1747 N. 17th Street. There are no meetings during the months of July and August. All are welcome to attend!!

Celebration of Life



Beech Community Services would like to extend our heartfelt condolences to the family and friends of the late Pastor Hattie Brown Stroud. Ms. Hattie, as she was affectionately known as, departed this life on January 6, 2016. "Ms. Hattie was a devoted community activist and took pride in her work helping children, women, and the community," states Earl Lively. "She was my second mother and her death is a tremendous lost to me and the entire community that she served."

Ms. Hattie was a beacon of light to the residents of the **Montgomery Townhouse Residents Association** where she delighted in helping area adults and children with food, shelter, jobs, and a listening ear. She implemented programs that would positively change the paths of at-risk youth by offering healthy and positive alternatives like after-school programs, food and clothing giveaways, and safe havens for runaway teens.

If you are interested in continuing the efforts of Ms. Hattie by volunteering or making a donation to the Montgomery Townhouse Residents, call (215) 765-2340.

Cecil B. Moore Community Newsletter



Beech Community Services

Featured Information

Kindergarten Open House Week

Will your child be 5 years old on or before September 1, 2016? If so, then enroll your child now for kindergarten. Visit your neighborhood school and be sure to bring:

- Your child's up-to-date immunization records
- Parent/Legal Guardianship Identification
- Don't forget two current proofs of address in the parent or guardians name

One of the following is required:

- Child's original birth certificate
- Notarized copy of the child's birth certificate
- Child's valid passport
- Original baptismal certificate indicating child's date of birth
- Prior school records indicating the date of birth

You and your child can preview kindergarten by visiting your local school during **Kindergarten Open House Week: May 9 – May 13, 2016**. Contact your local school for the specific day and time during the week.

Back to College for Adult Learnings

If you are an adult with some college credits and want to go back to finish your degree, **Graduate! Philadelphia's** expert advisors can help you:

- Understand your options
- Find the right college and program for you
- Get credit for your work and life experience
- Find money for college

Receive free personal support at **Graduate! Philadelphia** call, (215) 498-1504 or email Advisor@GraduatePhiladelphia.org.

Recognizing Excellence Gala

Mothers In Charge will host its 13th Anniversary Recognizing Excellence Awards & Dinner Gala on Thursday, April 21, 2016. The event will take place at Penn's Landing Caterers, 1301 S. Christopher Columbus Blvd, Philadelphia, PA 19147. The VIP Cocktail Hour begins at 5:00pm. The Gala is from 6:00pm-9:30pm with dinner and dancing. Free Parking is available.

The mission of Mothers In Charge is to support families affected by violence and serve as a violence prevention, education, and intervention-based organization. The organization advocates and supports youth, young adults, families, and community organizations. For more information about the event call (215) 228-1718 or visit the website at www.mothersincharge.org.

Veterans Services Center

The mission of Vet Centers is to serve veterans by providing a continuum of quality care that adds value for veterans, families, and communities. Care includes professional readjustment counseling, community education, outreach to special populations, brokering of services with community agencies, and providing a key access line between veterans and other services within U.S. Department of Veterans Affairs. For more information, visit the website: www.va.gov/rcs.

Cecil B. Moore Community Newsletter



Featured Information

Beech Community Services

Summer Camps and Internships in the City

Fashion University Summer Camp is accepting applications for individuals interested in the art of sewing. The camp is an innovative and exciting camp geared for teens and pre-teens that have a love for fashion! Whether your child wants to be a Pattern Maker, Fashion Illustrator, Fashion Editor, Fashion Designer or Personal Stylist – Fashion University is the Place for them!

When: June 20 – July 8 (1st session in Philadelphia)
July 11 – July 29 (2nd session in Cherry Hill, NJ & Philadelphia)
August 1 – August 19 (3rd session in Cherry Hill, NJ)

Time: Monday through Friday, 9AM – 3PM

Contact: www.christinephillipsonline.com

The City of Philadelphia's Division of Aviation has designed a structured summer internship program for high school students in order to expose young people to aviation careers. The Division's Internship Program provides 7-week summer job opportunities at the Airport for incoming juniors and seniors (11th & 12th grades) provided they meet certain criteria including:

- Good academic standing with overall grades of C or better
- A 90% or better attendance record
- Valid identification
- Interns 18 years and older must complete a medical assessment including drug test.

Prospective interns will need to provide the following to the Human Resources Coordinator prior to interviewing:

- Two current recommendation letters
- Current year high school record (report cards or transcripts accepted)

Selected Interns will:

- Work July 5, 2016 to August 20, 2016
- Submit a completed Intern Agreement Form
- Submit a completed Parental Acknowledgement of Minor's Duties and Hours of Employment Form per the Child Labor Act (to be provided to the Interns)

Students interested in the Internship Program must submit an internship referral form for consideration to Maryanne Mahoney by April 29, 2016. Please call the Division of Aviation's Human Resources office at (215) 937-5500 for more and referral forms.

You Earned It!

Did you earn less than \$53,267 last year? The City of Philadelphia wants to get your **Federal Earned Income Tax Credit (EITC)** by *April 18, 2016*.

EITC is a Federal Tax refund available to working individuals and families meeting certain eligibility requirements. The average credit amount in Philadelphia is over \$2,400. You could qualify to receive EITC if you:

- Meet income limits
- Age 25-65 or have a qualifying child
- Meet filing status requirements
- Are not a qualifying child of another person
- Are a U.S. citizen or resident alien all year
- Meet all other requirements

Call (215) 686-9200 to find a free tax preparation location near you. Visit www.YouEarnedItPhilly.com for help getting your refund.



**Beech
Companies**

Cecil B. Moore Community Newsletter



Featured Information

Utility Discounts for Seniors

Senior citizens whose bill is in their name can receive a 25% discount on their water and sewer bills.

Eligibility requirements:

- Bill must be in your name
- Must be at least 65 years of age
- Total annual income (of all household members) cannot exceed \$32,000

Additional requirements apply. Applications are accepted at the Municipal Services Building from 8am – 5pm. For more information, visit the Department of Revenue website at www.phila.gov/revenue. To have an application mailed to you call (215) 686-6800.

Community Policing Team

Officer Janae McDonald
Crime Prevention Officer – janae.mcdonald@phila.gov

Officer Shanna Moore
Community Relations Officer – shanna.moore@phila.gov

Officer Ba’Seemah Phifer
Community Relations Officer – baseemah.phifer@phila.gov

Officer Courtney Gilliam
Victims Assistance Officer – courtney.gilliam@phila.gov

To report Crime Anonymously, dial (215) 686-TIPS
To contact the District directly, call (215) 685-2705/2706
Follow the 22nd District on Twitter: @PPD22ndDistrict

Cecil B. Moore Community Times is published by Beech Community Services.
Publisher: Christine Brown, Director of Beech Community Services
President/CEO of the Beech Companies: Kenneth Scott

Community Resources Guide

Philadelphia Recycling.....	215-686-5560
Redevelopment Authority	215-854-6500
Philadelphia Housing Authority	215-684-4000
PHDC Weatherization.....	215-448-2160
PHDC Basic Systems Repair Program	215-448-2160
LIHEAP.....	215-560-2970
Community Legal Services.....	215-981-3700
Utility Emergency Services Fund	215-972-5170
Save Your Home Philly	215-334-4663
Philadelphia Corporation for Aging	215-765-9040
Veterans Advisory Commission	215-686-3256
Day Camp Programs	215-683-3600
Child Care Information Services.....	888-461-5437
Philadelphia Department of Recreation	215-683-3601
School District of Philadelphia.....	215-400-4000
GED Hotline.....	215-751-8376
Temple Small Business Development Center	215-204-7282
Department of Human Services.....	215-683-4347
Domestic Violence Hotline	800-799-7233
North Central Victims Services.....	215-763-3281
Crisis Hotline/Community Behavioral Health.....	215-413-7171
Philadelphia Operation Town Watch.....	215-686-1459
Philadelphia Police 22nd District.....	215-686-3220
City Council – 5th District Office	215-686-3442



www.beechinterplex.com